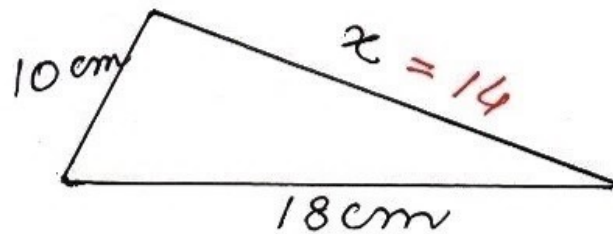


④



$$\text{Perimeter of } \Delta = 42 \text{ cm}$$

$$10 + x + 18 = 42$$

$$\Rightarrow x = 42 - 28$$

$$= 14$$

\therefore third side = 14 cm

$$\text{semiperimeter (s)} = \frac{42}{2}$$

$$= 21 \text{ cm}$$

$$\text{area of } \Delta = \sqrt{s(s-a)(s-b)(s-c)}$$

$$= \sqrt{21(21-10)(21-14)(21-18)}$$

$$= \sqrt{21 \times 11 \times 7 \times 3}$$

$$= \sqrt{3 \times 7 \times 11 \times 7 \times 3}$$

$$= 3 \times 7 \sqrt{11}$$

$$= 21 \sqrt{11} \text{ cm}^2$$