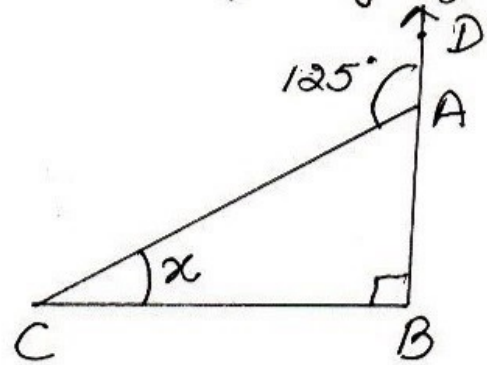


2(iii) $\angle DAC = \angle B + \angle C$ (exterior \angle property of Δ)

$$125^\circ = 90^\circ + x$$

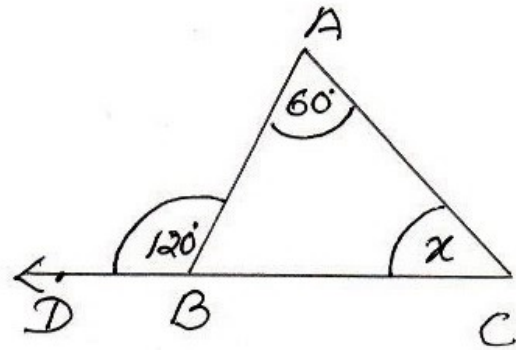
$$\Rightarrow x = 125 - 90 \\ = 35^\circ$$



2(iv) $\angle ABD = \angle A + \angle C$

$$120^\circ = 60^\circ + x$$

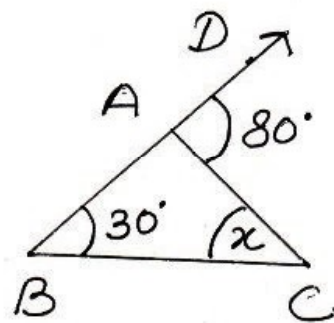
$$\Rightarrow x = 120 - 60 \\ = 60^\circ$$



2(v) $\angle DAC = \angle B + \angle C$ (exterior \angle prop. of Δ)

$$80^\circ = 30^\circ + x$$

$$\Rightarrow x = 80 - 30 \\ = 50^\circ$$



2(vi) $\angle BCD = \angle A + \angle B$

$$75 = x + 35$$

$$\Rightarrow x = 75 - 35 \\ = 40^\circ$$

