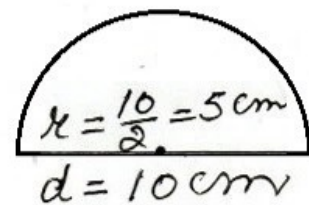
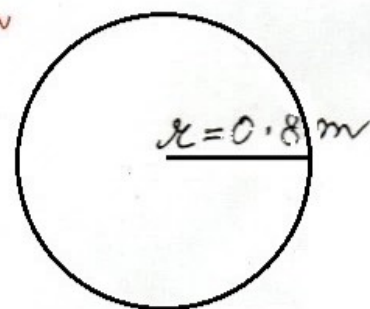


⑦ Perimeter of figure = $\pi r + d$
 $= \pi r + 2r$
 $= r(\pi + 2)$
 $= 5 \left(\frac{22}{7} + 2 \right)$
 $= 5 \times \frac{36}{7}$
 $= \frac{180}{7}$
 $= 25.71 \text{ cm}$



⑧ radius = $\frac{\text{diameter}}{2} = \frac{1.6}{2} = 0.8 \text{ m}$

area of table top = πr^2
 $= 3.14 \times 0.8 \times 0.8$
 $= 2.0096 \text{ m}^2$



⑨ Perimeter of \odot = length of wire

$2\pi r = 44$
 $\frac{2 \times 22}{7} r = 44$
 $\Rightarrow r = 7 \text{ cm}$

area of \odot = πr^2
 $= \frac{22}{7} \times 7 \times 7$
 $= 154 \text{ cm}^2$

