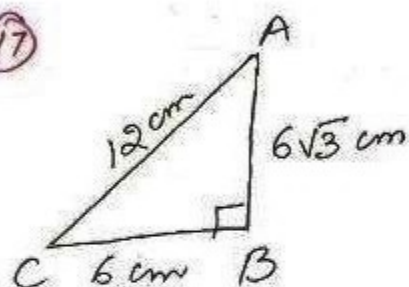


NCERT Sols by Dev Anoop (Bathinda)

Ex 6.5



(17)



$$AC^2 = 12^2$$
$$= 144$$

$$AB^2 + BC^2 = (6\sqrt{3})^2 + 6^2$$
$$= 108 + 36$$

$$\therefore AC^2 = AB^2 + BC^2 = 144$$

\therefore ABC is a right Δ by converse of pythagoras theorem.

$$\angle B = 90^\circ \text{ (c)}$$