



6. $WD \propto DT$

$\therefore x \propto y$

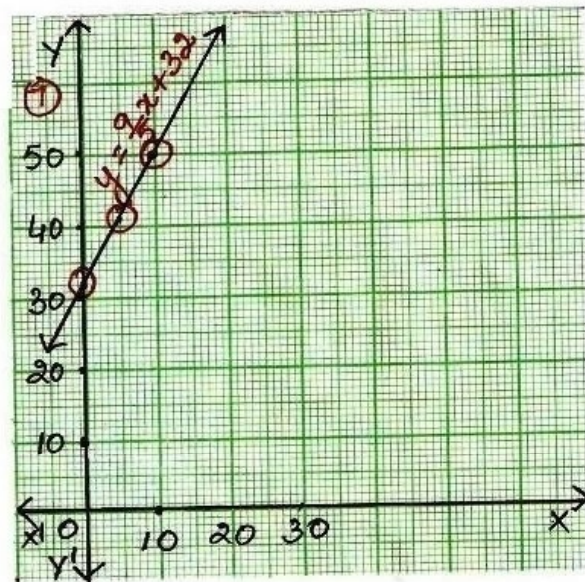
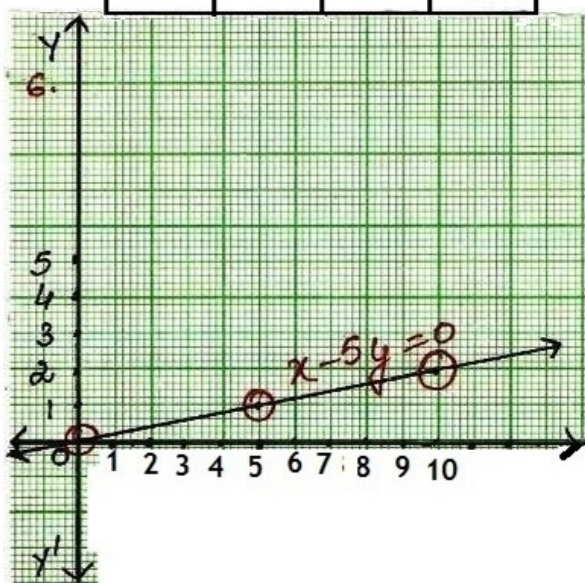
$\Rightarrow x = ky$

taking $k=5$

$x = 5y$

$\Rightarrow x - 5y = 0$

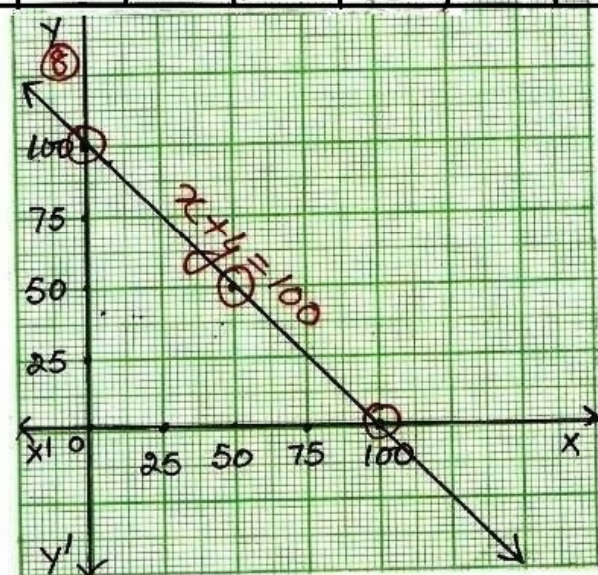
x	0	5	10
y	0	1	2



⑧ $F = \frac{9}{5}C + 32$

$y = \frac{9}{5}x + 32$

x	0	5	10	30	35	-17.8
y	32	41	50	86	95	0



⑦ let Yamini's contribution = Rs x

let Fatima's contribution = Rs y

acc. to condition

$x + y = 100$

$\Rightarrow x = 100 - y$

x	0	50	100
y	100	50	0

⑨ Put $y = x$

$x = \frac{9}{5}x + 32$

$(\times 5) 5x = 9x + 160$

$\Rightarrow -4x = 160$

$\Rightarrow x = -40$